

CONSULTATION DOCUMENT: REMOVING SURPLUS SECONDARY SCHOOL PLACES IN THE SOUTH OF TORFAEN



EDUCATION SERVICE
GWASANAETH ADDYSG
Interim Head of Education Service/
Pennaeth y Gwasanaeth Addysg Dros Dro
Dermot McChrystal BA (Hons) PGCE MSc



Your re/Eich cyf:
Our ref/Ein cyf:
Date/Dyddiad: 17th February 2014

Please
contact/Cysyllter â
Direct line/Llinell
union: Mark Horton
01495 766910

To: Statutory Consultees and Other Interested Parties

Dear Consultee,

REMOVAL OF SURPLUS SECONDARY SCHOOL PLACES IN THE SOUTH OF TORFAEN.

Since the commencement of the 21st Century Schools Programme, Torfaen County Borough Council has been considering various school reorganisation proposals including the reduction of surplus secondary school places in the south of the county borough.

Torfaen's Cabinet has now agreed to commence consultation on the removal of surplus secondary school places in the south of the county borough through:

- the closure of Fairwater High School with effect from September 2015
- the closure of Llantarnam School with effect from September 2015
- the formation of a new school on the Fairwater High School site from September 2015
- a review of the catchment areas for Llantarnam, Fairwater and Croesyceiliog for September 2015

It is important to note that before moving forward with the proposals, we wish to seek the views of all those with an interest in the proposals so that their views can be taken into account before decisions are made. The purpose of this letter therefore is to advise that a consultation document has been produced in relation to this proposal and is attached.

If further copies are required, please contact the above telephone number.

The consultation period will start with the issue of this letter, 17th February 2014, and will close on Monday 31st March 2014.

Any views or comments on the proposals can be made:

- By writing to the Interim Head of Education Services (FAO Mark Horton) c/o Torfaen County Borough Council, Civic Centre, Pontypool, Torfaen NP4 6YB.
- By email: secondaryreview@torfaen.gov.uk

THIS DOCUMENT IS AVAILABLE IN LARGER PRINT UPON
REQUEST

- By using Torfaen Council's online consultation tool, „my say“:
<https://mysay.torfaen.gov.uk/consult.ti/SecSchoolConsult/consultationHome> (English)
<https://mysay.torfaen.gov.uk/consult.ti/SecSchoolConsultCymraeg/consultationHome> (Welsh)
- By attending a consultation event (details below) and completing a response proforma (attached to the consultation document).

Consultation events:

Date	Venue	Time	Intended Audience
Tue 11 th March 2014	Croesyceiliog School	3.30pm - 4.30pm	Teaching, non-teaching and support staff of Croesyceiliog School
		4.45pm - 5.45pm	The Governing Body of Croesyceiliog School
		6pm - 8pm	Parents/carers of children attending Cwmbran primary and secondary schools and all other interested parties
Tue 18 th March 2014	Llantarnam School	3.30pm - 4.30pm	Teaching, non-teaching and support staff of Llantarnam School
		4.45pm - 5.45pm	The Governing Body of Llantarnam School
		6pm - 8pm	Parents/carers of children attending Cwmbran primary and secondary schools and all other interested parties. Welsh Translation Service available.
Wed 19 th March 2014	Fairwater High School	3.30pm - 4.30pm	Teaching, non-teaching and support staff of Fairwater High School
		4.45pm - 5.45pm	The Governing Body of Fairwater High School
		6pm - 8pm	Parents/carers of children attending Cwmbran primary and secondary schools and all other interested parties

Alternative arrangements will be made for children and young people to participate in the consultation, which will include the views of the school councils.

If you are unclear about anything or require further information or a welsh version of this document, please do not hesitate to contact me on 01495 766910, or email secondaryreview@torfaen.gov.uk

Yours sincerely



Mark Horton
PRINCIPAL OFFICER, FORWARD PLANNING

THIS DOCUMENT IS AVAILABLE IN LARGER PRINT UPON
REQUEST

Contents

1.	Background to the 21 st Century Schools Programme	1
2.	Background to the Proposals	3
2.1	Schools Affected	3
2.2	The New School	4
2.3	School Closure Details	5
3.	The Proposals	15
3.1	Description and Rationale	15
3.2	Explanation of the consultation and statutory process	24
4.	Response Pro-forma	26
5.	Other Information	26
Appendix 1	- Proposed Outline £6m Redevelopment of Fairwater site	27
Appendix 2	- Equality Impact Assessment	29
Appendix 3	- Quality of Provision	30
Appendix 4	- Maps of Fairwater, Llantarnam and Croesyceiliog Pupils	40
Appendix 5	- Catchment Area Maps	45
Appendix 6	- Proposed Catchment Area Adjustment	48
Appendix 7	- Revenue Savings Assumptions	50
Appendix 8	- Distribution List for the Consultation Report	51
Appendix 9	- Response Proforma	

Secondary school closure - Consultation document

1. Background to the 21st Century Schools Programme

Torfaen County Borough Council's 21st Century Schools Programme proposals were well received by Welsh Government in 2011. The investment criteria for the programme were defined as:

- To create safe learning environments for schools and communities that will enable the successful implementation of strategies for school improvement and better educational outcomes and life chances for children and young people that are aligned to our key strategies: Corporate Plan, Health Social Care and Well Being, School Effectiveness Framework, Welsh Medium Education Strategy.
- To achieve greater economy and efficiency through appropriate sized schools, collaboration and better use of resources to improve the cost effectiveness of the education system. In doing so, ensuring that we have schools of the right type, right size and in the right place.
- To develop a sustainable education system with all schools (equality) meeting national building standards and reducing the recurrent costs and carbon footprint.
- To achieve inspirational settings appropriate for new educational developments and new ICT-rich technologies and adaptable to cater for the changing needs of the future. (ICT – Information and Communication Technology)
- To provide an outstanding resource for the whole community where school facilities can be shared and which can offer a range of co-located facilities. e.g. Childcare, Health and Social Care, Adult Education, Youth and Play services.
- To achieve inclusive settings, providing for the individual learning needs for all pupils, providing pleasant and appropriate spaces for all school users; spaces in which pupils including those with additional learning needs and disabilities feel that their needs are respected.

For some parts of Torfaen it will result in new or refurbished schools. However, for some local communities it will mean the closure or amalgamation of their schools. This is not something new in Torfaen – since its inception, the council has been carrying out school reorganisation work to upgrade the estate involving a mixture of closures, amalgamations, refurbishments and new builds. This has resulted in the closure/amalgamation of some 28 schools with a net reduction of 18 schools overall.

The 21st Century Schools Programme has been well documented, with the council taking the decision to include every school as part of it in October 2010. The council sought the views of all interested parties on its programme during a series of road shows that were held across the county borough in March 2011.

The outcome of this public engagement was reported to cabinet in July 2011. Subsequent to this meeting, Welsh Government asked councils to revise their original Band A proposals (originally submitted in October 2010) against the following criteria:

- The level of match funding required by the council increased from 30% to 50%
- The poorest condition of the estate (prioritisation to reside with the council although the independent school survey data will be applied)
- Surplus capacity – the key indicator being surplus places (both as a percentage and as an estimated actual reduction in a number of places)
- Running efficiencies (e.g. reduction in running costs, backlog maintenance)
- The time period of Band A has been delayed and doubled from 3 to 6 years (2012-2014 to 2014-2019). The length of 21st Century School Band's B, C and D are yet to be determined.

The revised Strategic Outline Programme was approved by Council in November 2011 with the Welsh Government confirming match funding in December 2011.

The Council has to reduce surplus capacity in its schools and has been set targets by the Welsh Government to reach those targets by 2015.

The 21st Century Schools Programme in Torfaen and across Wales is intended to tackle these issues in a strategic rather than piecemeal way.

The proposal in relation to Fairwater and Llantarnam secondary schools is one identified in Band A (2014 to 2019) of the agreed programme.

Whilst Band A is approved in principle by Welsh Government, the investment will not go ahead until the business case is fully approved.

2. Background to the Proposals

2.1 Schools Affected

The schools affected or likely to be affected by the proposals are:

Name	Location	Age Range	Language Category	Category
Llantarnam School	Llantarnam Road, Cwmbran	11-18	English	Community
Fairwater High School	Ty Gwyn Road, Fairwater, Cwmbran	11-18	English	Community
Croesyceiliog School	Woodland Road, Croesyceiliog, Cwmbran	11-18	English	Community

The numbers on roll recorded for the previous 4 annual school censuses are:

School	2009	2010	2011	2012
Llantarnam	1487 (296)	1406 (293)	1333 (285)	1190 (258)
Fairwater	979 (228)	981 (258)	842 (194)	771 (189)
Croesyceiliog	1589 (266)	1592 (268)	1571 (292)	1540 (226)

Figures in brackets are 6th form numbers, already included in the first number where applicable.

The numbers of pupils on roll currently and forecasted for the next 5 years are:

Llantarnam	Actual	Projections				
	Sep-13	Sep-14	Sep-15	Sep-16	Sep-17	Sep-18
11-16	768	686	615	602	600	621
6 th form	235	181	155	131	116	99
total	1003	867	770	733	716	720

Fairwater	Actual	Projections				
	Sep-13	Sep-14	Sep-15	Sep-16	Sep-17	Sep-18
11-16	490	429	383	339	326	328
6 th form	227	175	165	146	110	94
total	717	604	548	485	436	422

Croesyceiliog	Actual	Projections				
	Sep-13	Sep-14	Sep-15	Sep-16	Sep-17	Sep-18
11-16	1309	1284	1289	1306	1305	1294
6 th form	244	248	237	246	255	241
total	1553	1532	1526	1552	1560	1535

Secondary school projections are based on actual numbers on roll as of September 2013 and pupils currently attending primary schools rolled forward year on year.

Projections take into account current parental preference trends and will therefore include pupils in and out of catchment.

The September 2014 admissions round for secondary schools has recently concluded and shows 58 Year 7 applications for Llantarnam, 91 for Fairwater and 232 for Croesyceiliog. In terms of the projections for Fairwater and Llantarnam, this would clearly impact the projected numbers above, reducing them further.

The current admission numbers and capacities of the schools, based on the Welsh Government „Circular No 21/2011 – Measuring the Capacity of Schools in Wales“ are:

School	Year 7 to 11	Year 12 and 13	Total Capacity
Llantarnam	243	131	1475
Fairwater	209	133	1312
Croesyceiliog	274	140	1651

The quality of accommodation with reference to categories of condition of the buildings of the schools in surveys carried out by the Welsh Government is as follows:

School	Condition Category
Llantarnam	C
Fairwater	C
Croesyceiliog	C

Key:

- A – Good (No deterioration)
- B – Satisfactory (Minor Deterioration)
- C – Poor (Major Deterioration)
- D – Bad (Life Expired)

2.2 The New School

New school details:

Proposed Admission Number	209
Age Range	11-18
Pupil places capacity	1312 (same as existing Fairwater site)
Location	Existing Fairwater High School site: Ty Gwyn Road, Fairwater, Cwmbran.
Accessibility	The site is Torfaen’s most DDA compliant secondary school. (Disability Discrimination Act)
Category	Community School
Language Category	English
Details of proposed accommodation	Existing Fairwater High School site, with £6m refurbishment to be carried out between 2015 and 2017.

	Some temporary accommodation to be used in 2015/16. Outline proposal of the refurbishment is provided in Appendix 1.
Home to school transport arrangements	The current mileage criteria for free transport is 2 miles (statutory 3 miles) for pupils aged 11-16. This also applies to post 16 pupils. This policy is currently under review with the possibility of reverting to statutory mileage.
Safe walking routes to school	Current information suggests there are pedestrian routes from all catchment areas of the existing Fairwater and Llantarnam schools to the Fairwater site. However, these routes will be reviewed if these proposals go ahead.
Special Educational Needs Resource base (SNRB)	Fairwater site currently houses a regional Autism SNRB. This will remain. Llantarnam currently houses the regional Hearing Impaired SNRB. This will be transferred to the Fairwater site.

2.3 School Closure Details

Alternatives considered and reasons why they were not taken forward

See section 3.

Impact on any affected school or provider

There are currently 3 secondary schools in the Cwmbran area and reducing this to 2 schools by the creation of a new school on the Fairwater site to replace Fairwater and Llantarnam may require new catchment areas to be defined for this school and Croesyceiliog School. (See section 3 for catchment review)

Impact of the proposals on the local community

As the new school is proposed to be located on the Fairwater school site, the impact will be greater on the Llantarnam area. Those pupils who live in close proximity to Llantarnam School will have further to travel to the proposed Fairwater site. However, some pupils may have the option of going to Croesyceiliog School which may be nearer, depending on the catchment review, the admissions criteria and number of applications. (See section 3 for pupil distance / travel data)

The impact on the general Llantarnam community in terms of loss or gain of community facilities or activities in the area is predicted to be as follows:

Provision	Likely Impact	Comment
Youth Service and Play Provision	Low/Medium positive	There are no out of school hours Youth and Play provision on the Llantarnam site, but there are on the Fairwater site, based in the Leisure Centre. These include summer and half term holiday play schemes and a weekly inclusion club.
Adult Community Learning (ACL) and Torfaen Training (TT)	None	Little impact on either TT or ACL as neither uses school premises and the number of learners who could progress to an apprenticeship with TT will remain the same.
Communities First, Prevent and Inclusion teams	None	The work of the Communities First, Prevent and Inclusion teams is similar in Fairwater and Llantarnam schools and is expected to continue with the creation of the new school on the Fairwater site, affording those pupils similar opportunities.
Leisure Facilities	Low/Medium	Depends whether these close with the school. See below for more details.

The Leisure Centre at Llantarnam School is currently run by the school. Activities on offer include:

- Public Swimming and swimming lessons
- Aqua Fitness
- Pool Inflatable Sessions
- Fitness Classes
- Circuit Training

Leisure Centre Clubs include:

- Martial Arts
- Badminton
- Archery
- Scuba Diving
- Slimming
- Rugby Tots
- Sports Hall bookings including 5-a-side football

The future of the Leisure Centre run by the school may have the following options:

- it closes with the school
- it is taken over by the Leisure Trust
- it is taken over by a community group to run it.

This is yet to be determined and your views on these options are welcomed.

If classes or club bookings cease to be available, there are other similar facilities in the area including Cwmbran Stadium and Fairwater Leisure Centre, so the impact is thought to be low to medium. These are both run by the Leisure Trust and any review of potential improvements to those facilities will be a matter for the Trust.

Information on other potential community impact items is as follows:

Item	Information
Proportion of pupils from the catchment area that attend Llantarnam School	53%
Proportion of pupils that attend Llantarnam from outside the catchment	47%
Proportion of pupils from the catchment area that attend Fairwater High School	66%
Proportion of pupils that attend Fairwater from outside the catchment	34%
The wider implications the changes would have on public transport provision.	Please refer to the section 3 under „Proposed new transport arrangements and accessibility of alternatives“
Wider community safety issues.	No safety issues are anticipated.
Equalities impact assessment	See Appendix 2

Impact on staff of schools

The staff at Fairwater and Llantarnam schools are being treated equally. If the proposals go ahead, they will all be at risk of redundancy and all eligible to apply for jobs at the newly formed school on the Fairwater site.

It is likely that there will be some staff losses, but this has not yet been examined in detail. Wherever possible the Council will seek to secure alternative suitable positions within Torfaen schools. This has previously been achieved for other school reorganisation proposals by negotiating a local agreement with the relevant professional associations, and it is expected that this would continue for this proposal.

Name and location of the proposed alternative provision

The name is to be determined, suggestions are welcomed.

The location will be the current Fairwater High School site, Ty Gwyn Road, Fairwater, Cwmbran.

Comparison of the quality and diversity of education provided by the schools from which the pupils would be transferred from to the proposed school.

See Appendix 3 for a comparison of the quality of provision at Fairwater High School and Llantarnam School.

The quality of education provided at the proposed school will be built on combining the strengths of the existing Fairwater and Llantarnam schools. Similarly, it is anticipated that the leadership team and staff at the new proposed school will work together to address any shortcomings, with the added support of the Education Achievement Service.

The diversity of education provided currently at Fairwater and Llantarnam schools is explained in the school prospectuses. These are available on the school websites:

<http://www.llantarnamschool.net/>

<http://fairwaterhighschool.co.uk/>

The diversity of education including the range of curriculum options these schools are able to offer in future may change as the pupil numbers fall. The 2 schools recognise this issue and are currently in discussions about the possibility of joint curriculum planning in order to ensure that they can deliver as broad a curriculum as possible in 2014/2015.

The proposed school will build on the strengths of the 2 existing schools, but have the benefit of all the pupils (and staff) being in one location, and therefore being able to deliver a diverse education on a single site.

Subject to the catchment review, parental preference and admission numbers, some pupils may transfer to Croesyceiliog School. This is a large school with over 1500 pupils on roll this year and as such can offer a full diverse education. The prospectus is available on the school website:

www.croesyceiliog.org.uk

The quality of education provided at Croesyceiliog is detailed in the report in Appendix 3.

Overall, we feel that the impact of the proposals upon outcomes, provision, leadership and management will be a positive one.

Admission arrangements at the proposed alternative school

The admission arrangements will be the same as for the existing Fairwater and Llantarnam schools, albeit with possible new catchment areas defined.

Comparison of the quality of accommodation of the existing and proposed schools

A description of the Llantarnam School site and its condition is as follows:

- Built in the 1950s-1970s. It consists of 6 blocks including leisure plus the 14-16 engineering workshop with a total net internal floor area of 11,521m² on a freehold site measuring approximately 30 acres.

- Numerous buildings of various ages providing educational accommodation. Set in landscaped grounds, the site also comprises „red gra“, play area, multi-use games area, 4 football/rugby pitches, athletics track, cricket strip and a car park.
- Level site in a mixed residential and commercial location. Access around the site is good, although not all areas are fully DDA (Disability Discrimination Act) compliant, and the buildings do not meet the DDA requirements laid down in the DDA act.
- Maintenance backlog of £2,133,206.
- Some areas of the school are in very good condition, but some are very poor and in need of substantial rebuilding and remodelling, to bring them up to 21st Century School Standards.
- Welsh Government condition grade C.
- Llantarnam buildings were constructed at different times, some are traditional masonry and cast concrete floors and economic scope for major remodelling is limited. Others are built around a steel or concrete frame which provides structural support and some internal remodelling could be carried out easily and at reasonable cost, but horizontal and vertical access is an issue and would need to be addressed by the provision of passenger lifts - these could be installed in most blocks though.
- Llantarnam School could be refurbished to a good standard (condition grade A) for an estimated £9m.

A description of the Fairwater School site and its condition is as follows:

- Built in the 1970s. It consists of 5 blocks including the leisure centre with a total floor area of 8519m² on a freehold site measuring approximately 34 acres.
- Numerous buildings providing educational accommodation. Set in landscaped grounds the site also comprises car park, multi-use games area, tennis courts, 2 red gra (one floodlit and fenced) and 2 rugby/football pitches.
- Sloping site situated in residential location. Access around the site is compensated for by ramps. The site is partially DDA compliant, but not all the buildings meet the DDA requirements laid down in the DDA act. Vertical and horizontal access is limited or non-existent in the technology and science buildings.
- Maintenance backlog of £1,854,167.
- Some areas of the school are in good condition, but many are very poor and in need of substantial investment and remodelling to bring them up to 21st Century School Standards.

- Welsh Government condition grade C.
- Fairwater main blocks are constructed using steel portal frames with metsec/steel lattice trusses supporting the whole structure on a raft foundation. This means that the majority of the internal walls are non load bearing and can be easily taken down and the buildings internally remodelled. It is a flexible form of construction - the autistic provision is an exception.
- Fairwater could be refurbished to a good standard (condition grade A) for an estimated £16m.

The shortcomings in the condition of the Fairwater school site on which it is proposed to establish the new school are to be addressed as follows:

- Band A (2014-2019) - an initial £6m refurbishment investment
- Band C (2023-2025) - a further £10m investment

These investments are subject to full business case approval by Welsh Government.

Improvements to the school (over the whole programme) would include:

- securing the external envelope to provide a wind and weather-tight, safe learning environment, along with upgrades and replacement of the obsolete services infrastructure including boiler plant and heating distribution.
- Demolition and site clearance of the technology and science blocks completely with internal remodelling to the upper and lower buildings to relocate the science and technology provision subject to capacity calculation requirements.
- large scale extensions to the teaching and learning environment to replace the technology and science departments including ICT, internal remodelling to provide a more flexible footprint layout to facilitate management of change as the curriculum evolves and advances in the future, such as additional teaching accommodation and laboratories. Toilet and changing facility upgrades and dining and kitchen upgrades and extension.
- Improvements to existing external and internal sports provisions when subsequent band funding is available.

As the proposal is at a formative stage, no drawing plans are available yet. However, outline proposals for the £6M investment in Band A are shown in Appendix 1.

A description of the Croesyceiliog School site and its condition is as follows:

- Built in the 1960s. It consists of 12 blocks with a total floor area of 12,277m² on a freehold site measuring approximately 43 acres.

- Numerous permanent and temporary buildings providing educational accommodation. Set in landscaped grounds the site also comprises car park, 2 fenced play areas, and provision for 5 rugby/football pitches with athletics track marked out and cricket.
- Level site situated in residential location. Access around the site is good and the site is partially DDA compliant externally but some restricted access still remains between blocks. The buildings do not meet the DDA requirements laid down in the DDA act.
- DDA access is non-existent vertically other than a newly installed passenger platform lift in west building which has limited capabilities. Therefore major remodelling would be required to remedy this in all buildings.
- Maintenance backlog of £ 2,611,824.
- All areas of the school are in very poor condition and in need of substantial investment and remodelling to bring them up to 21st Century School Standards.
- Welsh Government condition grade C.
- The buildings are constructed using a linear traditional form with masonry external walls and masonry corridor spine walls forming the load bearing rigid structure. The corridors are narrow, the intermediate floors are cast in-situ concrete, sitting on the load bearing walls. The internal configuration is not easily adaptable and is limited to the spaces within the load bearing elements - that said if funding or time was not an issue then the introduction of major steel components could facilitate some internal remodelling.
- The school does not lend itself to being easily or economically remodelled. Furthermore it would not be feasible to carry out works without decanting pupils in large numbers to temporary accommodation. It is more economical and practical to clear the site and replace it. There is scope on the existing site to build a new school whilst occupying the existing buildings. Staff and pupils could then decant directly into the new accommodation, followed by demolition and site clearance of all existing buildings and external works completion including new sports provision.
- The estimated cost of a new Croesyceiliog School is up to £36M.

The shortcomings in the condition of Croesyceiliog School will be addressed by the £36m rebuild investment in Band A (2014-2019) of the 21st Century Schools Programme, subject to full business case approval by Welsh Government.

[Information on how all the pupils will be accommodated at the proposed school on the Fairwater site](#)

The current capacity of the Fairwater site is 1312. The projected combined numbers of pupils from Llantarnam and Fairwater is 1318 for September 2015. Detailed year

group and class size mapping will be carried out as part of the transition process and any potential shortfall of classrooms will be catered for in the short term by temporary accommodation (demountable classrooms) and then addressed in the refurbishment programme. If the schools agree to it, this could commence before the formal transition process starts.

Subject to the catchment review, parental preference and admission numbers, some pupils may transfer to Croesyceiliog School. There are currently 125 surplus places in Croesyceiliog School forecast for 2015.

Impact on pupils' journeys to school

For those pupils currently attending Fairwater High School, there will be no impact.

For those currently attending Llantarnam School, the impact on pupils' journeys to school can be broken down into residential areas and will be subject to the catchment area review.

The Llantarnam catchment area is made up of the following residential areas:

- Thornhill & part of Upper Cwmbran
- Oakfield
- Southville
- Henllys
- Coed Eva / Hollybush
- Two Locks / St.Dials

Those currently residing in Thornhill and part of Upper Cwmbran, if placed in the catchment area of the new school on the Fairwater site, would have a shorter journey to school. The centre of the Thornhill / Upper Cwmbran area is about 3 miles from Llantarnam School compared to about 1½ miles to Fairwater High School. If placed in the catchment area of Croesyceiliog School instead, the distance is about 3 miles.

Those currently living in the Oakfield area, if placed in the catchment area of the new school on the Fairwater site, would have a longer journey to school. The centre of Oakfield is about ½ mile from Llantarnam School compared to about 2 miles to the Fairwater site. If placed in the catchment area of Croesyceiliog School instead, the distance is the same at about 2 miles.

Those currently living in Southville, if placed in the catchment area of the new school on the Fairwater site, would have a longer journey to school. The centre of Southville is about 1½ miles from Llantarnam School compared to 2 miles to Fairwater High School. If placed in the catchment area of Croesyceiliog School instead, the distance is about 1½ miles.

Those currently living in the Henllys area, if placed in the catchment area of the new school on the Fairwater site, would have a shorter journey to school. The centre of Henllys is about 3 miles from Llantarnam School compared to 1½ miles to Fairwater High School. If placed in the catchment area of Croesyceiliog School instead, the distance is about 4 miles.

Those currently living in the Coed Eva/Hollybush area, if placed in the catchment area of the new school on the Fairwater site, would have a shorter journey to school. The centre of Coed Eva/Hollybush is about 2 miles from Llantarnam School compared to 1½ miles to Fairwater High School. If placed in the catchment area of Croesyceiliog School instead, the distance is about 3 miles.

Those currently living in the Two Locks/St. Dials area, if placed in the catchment area of the new school on the Fairwater site, would have a similar distance journey to school. The centre of Two Locks/St. Dials is about 1½ miles from Llantarnam and Fairwater schools. If placed in the catchment area of Croesyceiliog School instead, the distance is about 2½ miles.

Those currently living in Torfaen, but outside Llantarnam's catchment area, would not have a significantly further distance (in many cases it would be shorter) to travel either to Fairwater or Croesyceiliog schools.

Those currently travelling from out of county, mostly living in the Bettws/Malpas area of Newport, would have further to travel. The centre of Bettws is about 3½ miles from Llantarnam School compared to about 5 miles to Fairwater High School. Should they wish to apply to transfer to Croesyceiliog School if there are places, the distance is about the same. Should they wish to transfer to Newport High School in Bettws, the distance is about ½ mile.

Overall, the majority of pupils who live in Torfaen would reside within 3 miles of the Fairwater site. There are pedestrian routes from all the catchment areas of Llantarnam School to Fairwater and Croesyceiliog sites.

See section 3 for further information on pupil travel distances and the potential catchment review.

Impact on the Special Educational Needs Provision

Fairwater has a regional Autism Special Needs Resource Base (SNRB) which caters for pupils with Autistic Spectrum Disorder who are able to access mainstream education. This provision is set up across 4 Local Authorities (Torfaen, Monmouthshire, Blaenau Gwent and Newport) and the capacity is 14. This provision is successful in working with pupils with social and communication difficulties and supports their transition to mainstream school. Most of the pupils stay on into the 6th form.

Llantarnam has a Hearing Impairment SNRB. The capacity is 24, but there are currently 14 pupils attending. There are 2 pupils from within the Torfaen area, 10 from Newport and 2 from Blaenau Gwent. All pupils have positive inclusion into mainstream education which has seen good academic results for learners with hearing impairments.

The Autism SNRB is expected to remain on the Fairwater site and the Hearing Impairment SNRB at Llantarnam is expected to relocate to the Fairwater site.

There is the opportunity to pool the resources and experiences of both existing schools in the proposed school for the benefit of pupils with special educational needs.

Potential disposal of Llantarnam School and land

It is proposed to continue educational provision on the Llantarnam School site by constructing a new primary school on part of the site. This proposal will be the subject of a separate future consultation. This would be located on the southernmost 4.5 acres of the site, next to the leisure centre. The future of the leisure centre will be determined following this current consultation.

If both the closure of Llantarnam School and construction of the new primary school go ahead, it is likely that the remainder of the Llantarnam School site will be declared surplus to education and Council requirements. As a result it will then be marketed for disposal to obtain best value from the disposal through competitive tenders. The Council has successfully undertaken similar disposal of other school sites that became surplus to its requirements in comparable circumstances.

Capital receipts from sales of school sites are allocated and utilised by the Council centrally, not by the Education Service. However, such capital receipts form a major part of the overall funding package for the 21st Century Schools Programme.

The site has no formal alternative planning designation but it is considered that its location within the urban boundary and specifically within a residential neighbourhood lends itself to residential development. Planning policy would permit this in principle under the Adopted Local Development Plan (2006-2021) but this is stated without prejudice to formal decision making under the planning process. It is likely that the part, if not all, of the land where the playing fields are located will be retained for the same purpose under any new development. Again the exact details in this respect will be a matter for the planning process.

The land areas at Llantarnam School are as follows:

Description	Hectares	Acres
Proposed primary school area	1.8	4.5
Existing playing fields	5.2	12.8
Leisure centre*	0.5	1.2
School footprint and remaining grounds excluding the above**	5.0	12.5
Total site area	12.5	31.0

* Potential surplus land if proposals approved.

** Definite surplus land if proposals approved.

For comparison purposes, the equivalent breakdown of land area at Fairwater is as follows:

Description	Hectares	Acres
Proposed primary school area	0	0
Existing playing fields	4.0	9.8
Leisure centre (leased to Leisure Trust)	0.3	0.8
School footprint and remaining grounds excluding the above	6.8	16.8
Total site area	11.1	27.4

For the avoidance of doubt, a similar approach would apply to the Fairwater site if the new school were earmarked for the Llantarnam site instead.

3. The Proposals

3.1 Description and Rationale

The main strengths of the status quo are:

- Continuity of education for learners
- More schools for parents to choose from

The main weaknesses of the status quo are:

- Rising number of surplus places
- Large maintenance backlogs, with little prospect of 21st Century Schools funding if status quo remains
- Increasing running costs
- Reduction in curriculum offering in future

The following tables show the projected surplus places for the 2 schools:

Llantarnam	Actual	Projections				
	Sep-13	Sep-14	Sep-15	Sep-16	Sep-17	Sep-18
Number of surplus places	472	608	705	742	759	755
% surplus places	32%	41%	48%	50%	51%	51%

Fairwater	Actual	Projections				
	Sep-13	Sep-14	Sep-15	Sep-16	Sep-17	Sep-18
Number of surplus places	595	708	764	827	876	890
% surplus places	45%	54%	58%	63%	67%	68%

The proposed capacity of the new school is the same as the existing Fairwater school, 1312. If the proposals go ahead on the Fairwater site, the combined

projected surplus places (of all existing Fairwater and Llantarnam pupils) for the newly formed school will be:

Proposed School	Actual	Projections				
	Sep-13	Sep-14	Sep-15	Sep-16	Sep-17	Sep-18
Number of surplus places	-	-	-6	94	160	170
% surplus places	-	-	0%	7%	12%	13%

The projected numbers on roll at the proposed school, based on the combined figures for Llantarnam and Fairwater are:

Proposed School	Actual	Projections				
	Sep-13	Sep-14	Sep-15	Sep-16	Sep-17	Sep-18
11-16	-	-	998	941	926	949
6 th form	-	-	320	277	226	193
total	-	-	1318	1218	1152	1142

As shown by the last table, all the pupils can be accommodated in the Fairwater site by September 2015 without an increase in capacity. As stated earlier, indicative Year 7 admission numbers for Fairwater and Llantarnam are 91 and 58 respectively. Come September 2014, should these be the actual admissions, this will reduce the projections further. Figures will be updated as part of the annual forecast in the 2014 autumn term.

There is a flexibility around capacity in the proposals through the use of additional temporary accommodation should it be required, which would be removed at a later date once the refurbishment of the school and pupil numbers and classes dictate. Decisions will be taken with the latest information available at the time.

The need to remove secondary school surplus places in the south of the borough through school closures was identified in the original Strategic Outline Programme (SOP), Cabinet report of October 2010, and confirmed in the revised SOP, Council report of November 2011.

The projected decline in pupil numbers and subsequent rise in surplus places in Fairwater and Llantarnam schools are still in line with predictions made in 2011 and are shown above. The schools are consequently less viable.

Advancing a proposal now will ensure that Torfaen Council is able to meet the Education Minister's target of no more than 15% surplus places by 2015.

Removal of a secondary school will also enable the council to raise capital through prudential borrowing as part of its committed funding package for the 21st Century Schools Programme. A capital receipt to the council from the sale of the site no longer in use would also contribute to the overall funding package of the 21st Century Schools Programme. This funding then becomes available to invest in the

remaining schools in Torfaen throughout the programme and releases match funding from Welsh Government of 50%.

The projected numbers on roll and surplus places at each school are unsustainable and therefore maintaining these 2 schools separately going forward was not considered to be a suitable option. However, alternatives that were considered were:

- Close both schools, amalgamate and re-open as a new school on the Llantarnam site
- Close both schools, amalgamate and re-open as a new school on the Fairwater site
- Straight closure of Llantarnam School, and the majority of pupils transfer to Fairwater
- Straight closure of Fairwater High School, and the majority of pupils transfer to Llantarnam
- Potential adjustment of catchment areas in the south of Torfaen in each case above

However, it is felt that an equitable approach towards staff of both schools should be taken and therefore the straight closure options are not considered appropriate. Closing both schools would ensure that the governance and staffing of the new school could be built on the respective strengths of the two existing schools.

The Fairwater site is considered to be the most appropriate site going forward and the overriding reason is because it is more at the centre of the learner population than the Llantarnam site in this area of Torfaen, as illustrated on the maps in Appendix 4.

In addition, Fairwater High School is more DDA (Disability Discrimination Act) compliant.

Having schools in the right place, close to the learner populations they serve, is one of the key principles of the Council's 21st Century Schools Programme. With fewer schools to maintain, the Council, matched by Welsh Government funding, can then afford to replace or refurbish those that remain.

The final outcome of discussions on Post 16 education is not determined and therefore throughout this consultation it is assumed the 6th form provision will remain intact. Any change in status of the secondary schools in Torfaen will be addressed at an appropriate time in the future and when funding for the Post 16 project becomes available.

It is proposed that the new school will open on the Fairwater site in September 2015 with the addition of temporary accommodation if required and the refurbishment would be carried out between 2015 and 2017, subject to release of funding.

Catchment review and pupil travel distances

When reviewing potential catchment area changes we have considered the following:

- The number of pupils who attend each of the 3 secondary schools and which catchment areas they are from (i.e. in catchment or from another school's catchment area)
- Where pupils live that currently attend Llantarnam, Fairwater and Croesyceiliog schools
- The distances of current Llantarnam catchment areas to Llantarnam, Fairwater and Croesyceiliog schools
- Any logical splits relating to main roads or areas in Cwmbran.

Then as a check and balance exercise, we have examined:

- The number of pupils currently in primary schools and how their catchments might fit into 2 secondary schools instead of 3.
- The number of properties in each catchment
- Areas where potential housing developments may occur in future.

The following table shows how many pupils attend each of the 3 schools in the Cwmbran area and what catchment areas they live in:

What Catchment Area the pupils come from	Number of pupils on roll		
	Croesyceiliog School	Fairwater High School	Llantarnam School
Abersychan	17	4	12
Croesyceiliog	894	27	63
Fairwater	98	502	170
Llantarnam	231	172	619
West Mon	231	15	19
Out of County	52	37	291
Total	1523	757	1174
Number In Catchment	894	502	619
% in catchment	59%	66%	53%
Number Out of Catchment / County	629	255	555
% Out of Catchment / County	41%	34%	47%

The previous table shows the analysis based on June 2013. Items to note include:

- There is a high degree of out of catchment movement across all schools
- Fairwater has the highest percentage of „in catchment“ pupils
- Croesyceiliog draws a large number of pupils from Llantarnam, Fairwater and West Mon
- Llantarnam and Fairwater „trade“ approximately 170 pupils each way
- Compared to the other schools in the south, Fairwater has the lowest number of pupils on roll
- Thornhill and part of Upper Cwmbran, just north of Fairwater school, is in Llantarnam's catchment area. We believe this historical anomaly is because there was insufficient room in Fairwater at the time the houses were built.

Hypothetically, if this were reversed, there could be a swing away from Llantarnam of 300 to 350 pupils (which represents hypothetical amounts of 80% to 100% reverting overnight).

- Llantarnam's number on roll includes a high number of out of county pupils.
- The removal of secondary school places in the south of Torfaen will over time have a positive impact on surplus places in the north (i.e. West Mon).

The maps in Appendix 4 show the locations of where pupils live in relation to the school they attend. i.e. Fairwater, Llantarnam or Croesyceiliog.

The approximate distances of current Llantarnam catchment areas to Croesyceiliog and Fairwater sites are shown in the following table, along with the approximate number of pupils that currently live in those areas:

Area	Approx. Number of pupils attending Llantarnam by area	Approximate distance from centre of area to each school site		
		Croesyceiliog site	Fairwater site	Llantarnam site
Thornhill & part of Upper Cwmbran	161	3 miles	1.5 miles	3 miles
Oakfield	144	2 miles	2 miles	0.5 miles
Southville	21	1.5 miles	2 miles	1.5 miles
Henllys	41	4 miles	1.5 miles	3 miles
Coed Eva/Hollybush	63	3 miles	1.5 miles	2 miles
Two Locks / St. Dials	125	2.5 miles	1.5 miles	1.5 miles

Cwmbran Drive is an obvious main road to look at when looking to redraw catchment areas.

Based on all the preceding information, we propose the following catchments for the remaining schools in Cwmbran, with effect from September 2015 Year 7 admissions:

- Proposed school on Fairwater site – existing catchment area for Fairwater, plus Thornhill / part of Upper Cwmbran, Henllys, Coed Eva / Hollybush and Two Locks / St. Dials areas.
- Croesyceiliog School – existing catchment areas for Croesyceiliog plus Oakfield and Southville areas.

The maps in Appendix 5 show the current and proposed catchment areas.

Based on the proposed catchment areas, the check and balance exercise looking at the existing primary school children, the number of existing properties and potential new housing developments in each catchment, show that the proposal is appropriate. For further information, see Appendix 6.

Whether or not pupils qualify for free school transport will depend on the separate consultation on School Transport to follow. As it stands at the moment, all pupils over 2 miles from their catchment school qualify for free transport.

At the proposed time of implementation, September 2015, it is proposed that all the pupils in Fairwater and Llantarnam schools will transfer to the school to be formed on the Fairwater site and each one will be guaranteed a place there.

The majority of those pupils currently receiving free home to school transport to Llantarnam School would be within 2 miles of the Fairwater site and therefore no longer receive it. Whilst a cost saving was not a factor in the decision making process, it would represent an annual saving to the Local Authority of approximately £96,000. There will only be a handful of pupils who do not currently qualify for free home to school transport who will now qualify, should the proposals go ahead.

Benefits, Disadvantages and Risks

The benefits of going ahead with the proposals are:

- Closure of a secondary school enables the council to achieve the 15% surplus places target figure by 2015.
- It brings the pupils together from the 2 schools with falling numbers, thus making it possible to offer a broader curriculum and diverse education on a single site.
- It will attract Welsh Government capital investment funding.
- It enables the Local Authority to raise funding for the programme through potential revenue savings and capital receipts.
- Investment in one school is affordable, whereas investment in the 2 separate schools is not.
- The new school can be built on the respective strengths of the two existing schools and give pupils and staff an opportunity to work together to raise standards of education in the area.
- There will be additional community benefits brought about by the refurbishment project as have been achieved on recent capital build projects e.g.:
 - local construction employment and training opportunities
 - work placements for socially inactive people
 - sponsorship of local sporting clubs
 - donation of tools and equipment to schools and community groups
 - events at schools to promote health and safety
 - sponsorship of community events
- Schools with fewer surplus places are more viable financially.
- Rationalised building stock and reduced on-going maintenance burden.

Disadvantages of the proposals are:

- Temporary disruption caused to pupils and staff during the transition
- Some pupils may have further to travel to school
- Some staff losses may be incurred.
- Less parental choice

However, the Local Authority believes the benefits outweigh the disadvantages.

The risks and counter measures are:

<u>Risks</u>	<u>Counter measure</u>
Pupils' education may be disrupted.	Transition arrangements will be put in place.
The proposals are delayed and the management of the existing schools becomes unviable due to the falling numbers of pupils.	Finance department to work with schools on budget and advise the governing body on any steps they may have to take.
Minister may take action if we do not address surplus places by 2015.	Regular communication with Welsh Government officials required.
Staff losses	Human Resources will work with staff and governors to try and minimise staff losses and to find alternative employment.
Increased traffic around Fairwater site.	All the pupils will fit in the site without increasing the capacity. However, work can be done with the school on travel plans to encourage avoiding using the car where possible. Work with local public transport providers to alert them to potential increased demand. Refer to School Transport consultation.
Short term increased demand on Local Authority and schools staffing resources.	Review resources required to manage the process including consulting with other local Authorities who have recently carried out secondary school closures.

Implementation date and transition arrangements

The proposed effective date of the closure of the 2 schools is 31st August 2015 and the proposed opening date of the new school on the Fairwater site is 1st September 2015.

Transition arrangements will commence as soon as the proposals are confirmed. Among other things, these will address how parents' and pupils' engagement with the alternative school and any facilities it may offer would be supported.

A temporary governing body would be put in place at the earliest opportunity and staff and pupils informed about transition arrangements affecting them.

The council recognises the importance of an effective and smooth transition process to ensure there is little if any disruption, should the proposal to close a school be approved.

The council will establish a transition group to oversee the process involving officers, the head teachers and the chairs of governors of the schools concerned. This group would meet on a regular basis up to and beyond any implementation date. Parents/carers and pupils will be provided with relevant information to aid their understanding of the transfer process and the most appropriate support they can offer their children during the period of transition. The schools will also work together with other services and agencies as necessary, to identify families who may need additional support, at the point of, and after their children's transfer.

Pupil, parental and community engagement is a key priority and examples of work to be taken forward could include:

- Joint school and after-school events (particularly for any less advantaged pupils);
- Gradual introduction of events to support parents in assisting with their children's learning;
- Enhanced tracking for those pupils with a particular need;
- Initiatives to encourage improved levels of attendance;
- Anti-bullying initiatives.

Potential revenue savings and costs

The current revenue funding figures, forecasted for 2013-14 financial year for the 3 schools are £3,100,000 for Fairwater, £4,200,000 for Llantarnam and £5,200,000 for Croesyceiliog.

The estimated revenue savings are £698,000 per annum if Llantarnam and Fairwater schools close and a new school is opened on the Fairwater site. This is based on a set of assumptions as listed in Appendix 7. Had the proposals been to open the new school on the Llantarnam site instead, the estimated revenue savings would have been £626,000 per annum.

Revenue funding is provided to schools by the Local Authority in order to meet their costs. Revenue savings generated from the closure of a school are available for re-investment by the Local Authority. This includes supporting access to prudential borrowing which contributes to the Local Authority's 21st Century Schools overall funding package.

Capital funding costs

The capital investment required for the Fairwater site is an initial £6m investment in Band A, followed by an additional investment of £10m in Band C (2023-25).

The source of capital funding for Band A of the 21st Century Schools Programme is 50:50, Local Authority and Welsh Government.

The Local Authority part in this case is made up of core capital and previous capital receipts.

Description of new accommodation

An outline proposal for the £6m investment is detailed in Appendix 1.

Proposed new transport arrangements and accessibility of alternatives

The vast majority of pupils in catchment for the proposed school will be within a walking distance of 3 miles, but this may not be the preferred method of getting to school for everybody.

There are public service buses from the existing catchment areas of Llantarnam School to the Fairwater and Croesyceiliog sites. For information on possible buses from a particular area, there are several websites that may assist in providing alternatives including:

<http://www.torfaen.gov.uk/en/TransportStreets/PublicTransport/Buses-informationandadvice/Bus-Services.aspx>

<http://www.stagecoachbus.com/localdefault.aspx?Tag=Cwmbran>

<http://www.traveline-cymru.info/>

Free school transport is currently the subject of a separate consultation. Once this has taken place and the decision known whether to stay at 2 miles or extend it to 3 miles, more information will be published as to how it may affect pupils currently attending Fairwater or Llantarnam schools, including accessibility of alternatives if applicable.

Staffing Issues

If the proposals go ahead, the temporary governing body will be responsible for determining the new school's staffing structure and appointing staff. The existing governing body will be responsible for any other staffing issues through to the closure of the schools. A new governing body will be in place from 1st September 2015.

The impact on staff was outlined in section 2.3.

Community Impact Assessment

See section 2.3.

Welsh Language Impact Assessment

As the schools involved are English medium, there is no expected impact on Welsh language provision.

3.2 Explanation of the consultation and statutory process

The Consultation

The consultation is seeking your views on:

- the closure of Fairwater High School with effect from September 2015
- the closure of Llantarnam School with effect from September 2015
- the formation of a new school on the Fairwater High School site from September 2015
- a review of the catchment areas for Llantarnam, Fairwater and Croesyceiliog for September 2015;

As recommended by the Welsh Government School Organisation Code, we are carrying out this consultation whilst the proposals are still in a formative stage and some details are still to be determined. Therefore, in addition to giving your views on the above principle items, in order to help finalise the details, you are invited to give your views in relation to the following:

- transition for pupils and staff in relation to Key Stage 3, GCSE and Post 16
- the timing and nature of the subsequent refurbishment of the Fairwater site
- suggestions for the name of the proposed school
- the on-going viability or operation of Llantarnam Leisure Centre if the school which currently operates it, closes.

During the consultation period, council officers will meet with staff and governors from both schools in order to continue discussions on the following:

- steps that need to be taken to ensure the education of Key Stage 3 pupils, GCSE and Post 16 pupils does not suffer.
- year group and class size mapping
- curriculum and subject/course mapping
- accommodation refurbishment including special educational needs (SEN) provisions
- timing of the refurbishment of the Fairwater site

The Statutory Process

Before any decision is made on the proposal, the council is required to hold a statutory consultation with all interested parties and the following information is provided to set out the process by which consultation will be conducted.

The consultation period will run from Monday 17th February 2014 to 31st March 2014. Any comments, views or alternatives to the proposal can be made:

- by writing to the Interim Head of Education Services (FAO Mark Horton) c/o Torfaen County Borough Council, Civic Centre, Pontypool, Torfaen NP4 6YB.
- by email: secondaryreview@torfaen.gov.uk
- by using Torfaen Council's online consultation tool, „my say“: <https://mysay.torfaen.gov.uk/consult.ti/SecSchoolConsult/consultationHome> (English),

<https://mysay.torfaen.gov.uk/consult.ti/SecSchoolConsultCymraeg/consultationHome> (Welsh)

- by completing the response proforma and returning it to the above mentioned address.

It is important to note that any unfavourable comments made during the consultation period will not be treated as objections and that if you wish to object, you should do so in writing during the statutory objection period, should the proposals progress to that stage. However, if consultees submit a request during the objection period that a response submitted at the consultation stage should be treated as an objection, this will be accepted.

The views of children and young people are important. Workshops will be undertaken by Torfaen Play Service with primary school aged children and meetings with secondary school council representatives will be undertaken by council officers in the Education Service and Youth Service. Appropriate consultation will be carried out with pupils in the Special Educational Needs resource bases. All their comments will be included in the report back to Cabinet.

An indicative timeframe for the process following the conclusion of this consultation period is as follows:

Milestone Activity	Date
Consultation on the proposals	Feb/Mar 2014
Cabinet receive report on the outcome of the consultation and consider. (Note: If Cabinet decide not to proceed, no further action. If Cabinet decide to proceed with the proposals and recommend publication of statutory notice with specific delegated authority to Executive Member for Children & Young People to proceed where no objections received.)	May 2014
Statutory Notice published (1 month objection period; published on a school day and not less than 15 days before end of term so at least ½ of the notice period is in term time).	Summer Term 2014
Decision on the proposals. Notice Period: If no objections are received, local determination of proposal is via a report to the Executive Member for Children & Young People. If objections are received, under the new school organisation process/regulations the determination of proposal will be the function of the Local Authority's Executive (Cabinet). The statutory minimum requirement is that a full term's notice of the decision to proceed would have to be given i.e. no later than the end of the Spring Term in 2015.	Summer Term 2014
Statutory Proposals implemented	September 2015

Dates are indicative at this stage and will be confirmed in the report to Cabinet.

Consultees

A list of all those being consulted is attached as an Appendix 8 to this document.

4. Response Pro-forma

A response pro-forma for comments, including an opportunity for consultees to register their wish to be notified of publication of the consultation report, is attached to this consultation document in Appendix 9.

5. Other Information

Further information on this and other proposals can be found on Torfaen Council's online consultation tool, „my say“:

<https://mysay.torfaen.gov.uk/consult.ti/SecSchoolConsult/consultationHome>

(English)

<https://mysay.torfaen.gov.uk/consult.ti/SecSchoolConsultCymraeg/consultationHome>

(Welsh).

This will include Frequently Asked Questions and a Welsh version of this document.

Appendix 1 – Proposed Outline £6m Redevelopment of Fairwater site

Indicative proposal, subject to detailed survey, determining clients’ requirements and specification.

Upper Block

Accommodation comprises main entrance to school, administrative core, senior management and staff areas, kitchen/dining, 6th form common room, general and core subject teaching areas.

The main block has had the benefit of substantial capital investment over the last 10 years including a new roof, eaves details, clerestory (high level) glazing to hall, general glazing and doors with external shutters, fire alarm and DDA (Disability Discrimination Act) compliance works amongst other improvement and repairs.

The main focus for the re-development is internal refurbishment including services, finishes, electrical upgrade, heating distribution upgrade and some internal remodelling and conversion works.

Lower Block

Accommodation comprises a specialist autistic unit completed within the last 7 years, performing arts, general and specific teaching areas and breakout spaces. Some general refurbishment has been carried out during the last 10 years including cladding, windows, doors, fire alarm and shutters.

Areas of focus under the re-development remain roof access control measures to prevent unauthorised roof access, roof lights, internal remodelling and refurbishment and heating distribution.

Technology Block

Core technology teaching accommodation including post 16.

Little capital investment over the last 10 years and in need of complete refurbishment and some internal remodelling including:

- flat to pitched roof conversion including new eaves detail and rainwater goods,
- new windows and doors,
- replace technology equipment,
- upgrade electrical and mechanical services and ICT,
- improve DDA accessibility via horizontal and vertical circulation by installation of lifts and compliance (of new installations) with DDA requirements i.e. corridor widths and visual impairment requirements

Science Block

The core science accommodation is in need of major capital investment. Little capital investment over the last 10 years and in need of complete refurbishment and some internal remodelling including:

- flat to pitched roof conversion including new eaves detail and rainwater goods,
- windows and doors,
- replace technology equipment,
- upgrade electrical and mechanical services and ICT,
- improve DDA accessibility via horizontal and vertical circulation as Technology block

General Provisions

- Provide portable sound field and include hearing impaired provision.
- Increase and improve car parking and coach parking.
- ATP (astroturf pitch) and sports provision upgrade if possible
- Boiler plant renewal
- Demolish and clear away former caretaker's bungalow or convert to hair and beauty facility.

Post 16

If the new campus is later developed as an 11-16 school, then savings can be made on accommodation and capital spend bearing in mind capacity can be reduced from 1312 to around 1000 places – a more detailed discussion on the options would be taken forward on how to deliver the reduction but options around the technology or science block removal could become options along with conversion of the 6th form common room to alternative provision.

A possible approach would be to carry out an initial refurbishment for approximately £5m and hold back approximately £1m for spend later in Band A when any potential change to Post 16 provision is determined.

General Contingency and Temporary Accommodation

A contingency is advised to be included for the whole project to cover general contingencies and should the need arise for temporary accommodation by the use of demountable buildings.

Total capital investment £5m+ £1m.

Appendix 2 - Equality Impact Assessment

An Equality Impact Assessment is undertaken in conjunction with and as part of the Community Impact Assessment and examines the potential equality implications of Council proposals.

The following are known as the “protected characteristics” in the Equality Act 2010 and are the groups that need to be considered: age; disability; gender; marriage and civil partnership; pregnancy and maternity; race; religion and belief; and sexual orientation.

Given the nature of this proposal, many of the above groups will not be impacted and this can be demonstrated by responding to the following questions.

- 1) Is the proposal likely to damage, or improve, relations between any particular groups or between the Council and those groups?
- 2) Are there any other community concerns or risks to communities that potentially arise, or are addressed, from the proposal?
- 3) Is the proposal likely to diminish, or improve, positive attitudes towards different groups or restrict broader participation in public life?
- 4) Will the understanding of issues of race, disability, gender, social inclusion/community, Welsh language, ethnicity, age, religion or sexual orientation be promoted or damaged?
- 5) Is the proposal likely to have a negative or positive impact upon groups with „protected characteristics“?
- 6) Is consultation required with any of the groups listed? (Note: if there is an impact, consultation is a requirement)

The assumption is that in many aspects the answers will be that there is no impact. However, there may be particular issues that arise in relation to the needs of the local community (i.e. children).

Any issues will however be drawn out as part of the consultation process. For example if there are children at the school with „access“ needs, this will be reviewed as part of the consultation process when considering the nature of the school buildings that children would transfer to.

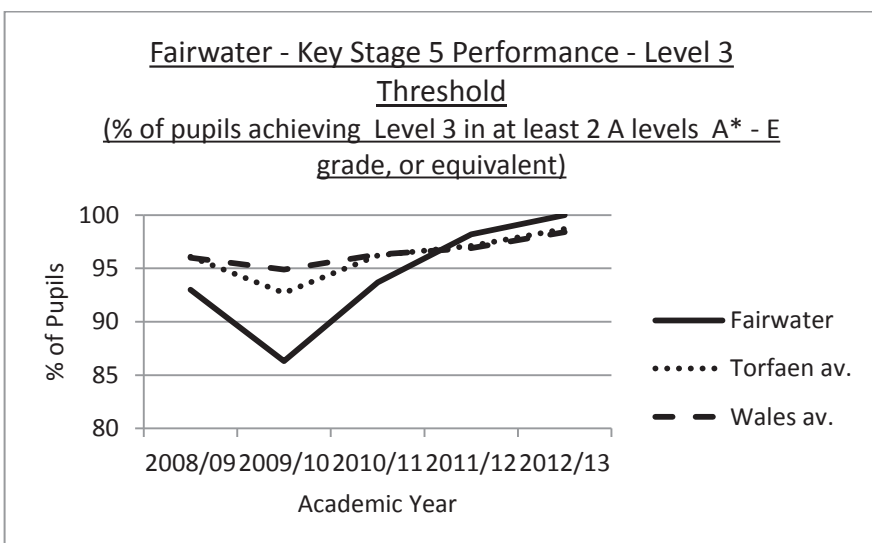
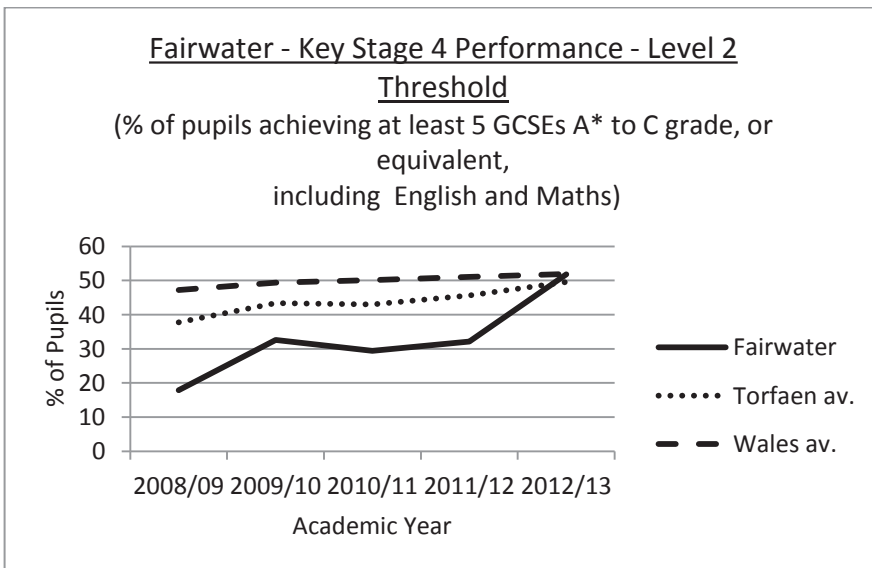
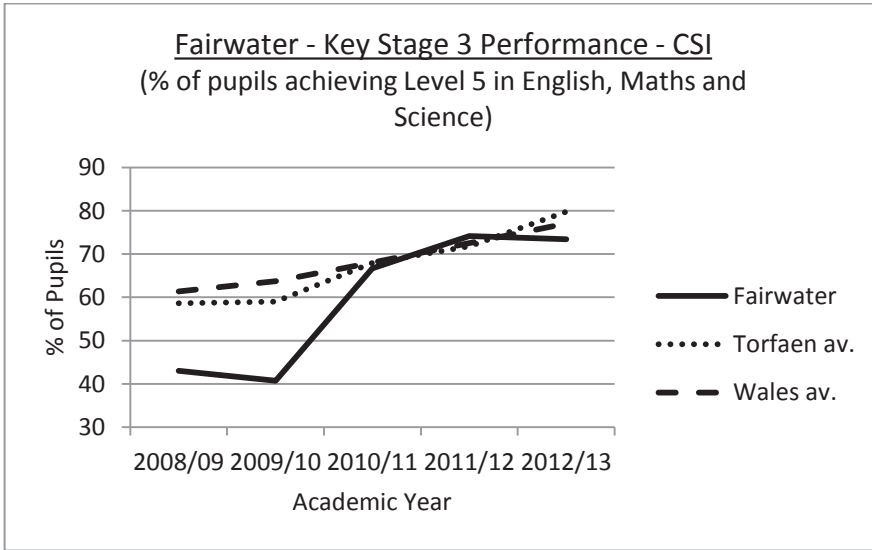
The consultation will also consider if there are any groupings of children by ethnic group whose particular needs are currently well met by the existing arrangements of secondary schools in Cwmbran and whose needs will need to be considered by the alternative proposals.

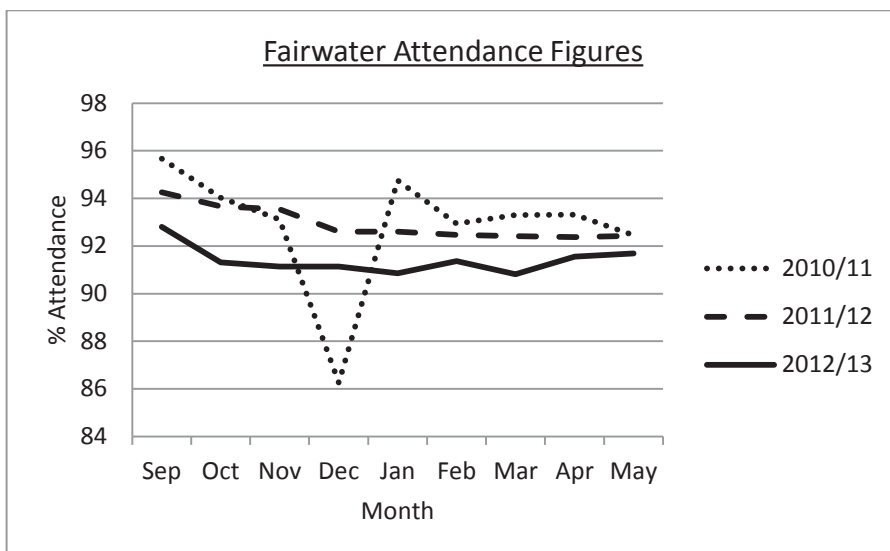
Appendix 3 – Quality of Provision

- School Performance Report for Fairwater High School
- School Performance Report for Llantarnam School
- School Performance Report for Croesyceiliog School

School Performance Report - Fairwater High School

Standards Achieved





Estyn Report

During each inspection, inspectors aim to answer three key questions:

- Key Question 1: How good are the outcomes?
- Key Question 2: How good is provision?
- Key Question 3: How good are leadership and management?

Inspectors also provide an overall judgement on the school's current performance and on its prospects for improvement. In these evaluations, inspectors use a four-point scale:

Judgement	What the judgement means
Excellent	Many strengths, including significant examples of sector-leading practice
Good	Many strengths and no important areas requiring significant improvement
Adequate	Strengths outweigh areas for improvement
Unsatisfactory	Important areas for improvement outweigh strengths

The most recent Estyn inspection of Fairwater High School took place in January 2011, the results of which are as follows:

Summary	Judgement
The school's current performance	Unsatisfactory
The school's prospects for improvement	Adequate
Key Question 1: How good are outcomes?	Unsatisfactory
Key Question 2: How good is provision?	Adequate
Key Question 3: How good are leadership and management?	Adequate

The full report is available on the Estyn website:
<http://www.estyn.gov.uk/english/provider/6784062/>

Following this inspection, the school was placed under Estyn Monitoring, from which it has been subsequently removed.

Local Authority Assessment

The Local Authority assessment of quality of education at Fairwater High School is undertaken on their behalf by the Education Achievement Service (EAS). The assessment is made by categorising the level of intervention and support required for school improvement against several aspects.

The latest categorisations at the time of going to print are as follows:

Aspect	Category / note
Overall	Minor
Standards	Significant
Safeguarding	Strong
Attendance	Minor
Leadership	Minor
Welsh Government School Banding	Significant
Estyn Inspection Report	Significant
Finance	Forecast of a projected budget surplus for 2013-14, reducing in 2014-15.

Key to levels of intervention and support in relation to school performance:

Category	Description
Strong	Routine Support and Monitoring
Minor	Specific Intervention - Minor Issues
Significant	Sustained Intervention - Significant Issues
Particular	Intensive Intervention - Particular Concern
Critical	Critical Intervention - Critical Concern

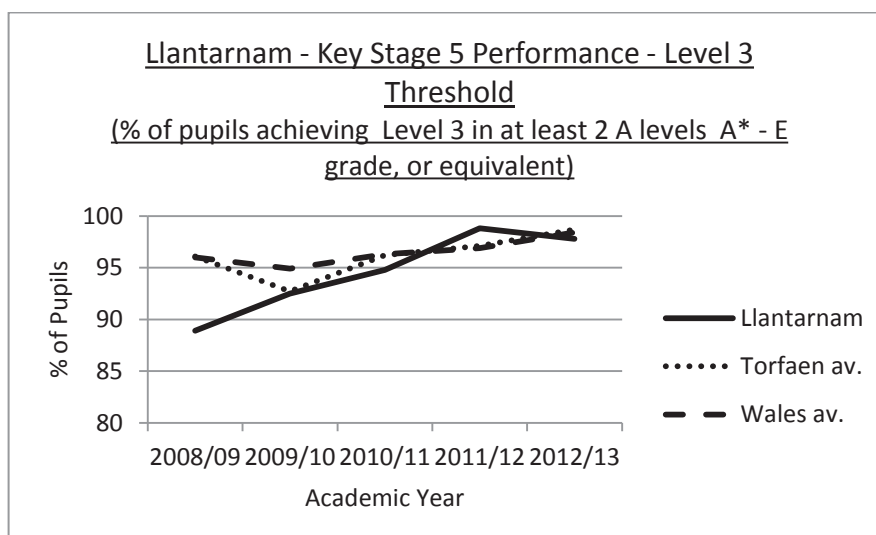
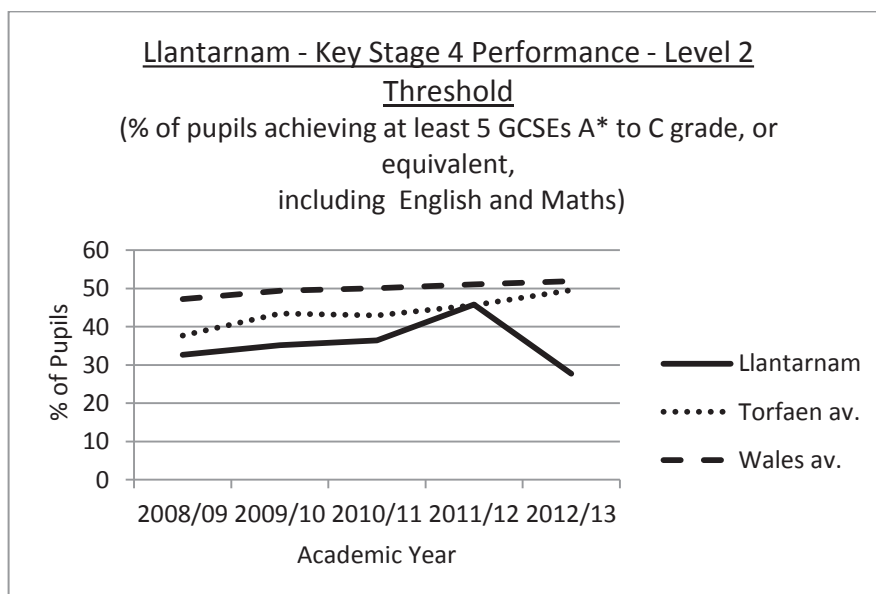
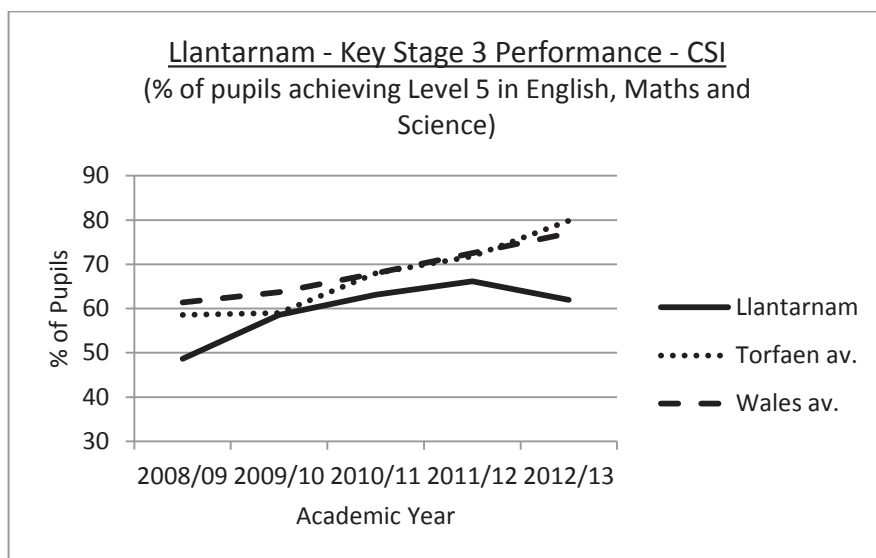
Further information about the Intervention Framework is available on the Torfaen Council's „my say“ website:

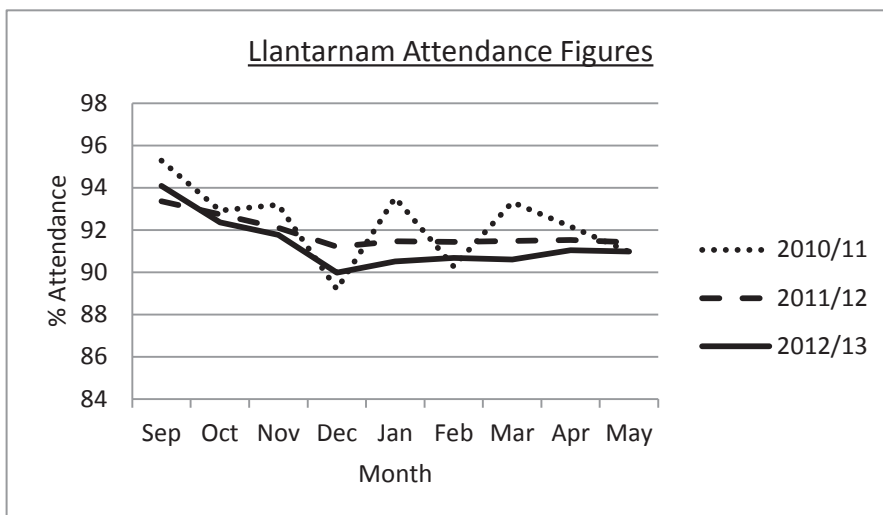
<https://mysay.torfaen.gov.uk/consult.ti/SecSchoolConsult/consultationHome> (English)

<https://mysay.torfaen.gov.uk/consult.ti/SecSchoolConsultCymraeg/consultationHome> (Welsh)

School Performance Report - Llantarnam School

Standards Achieved





Estyn Report

During each inspection, inspectors aim to answer three key questions:

- Key Question 1: How good are the outcomes?
- Key Question 2: How good is provision?
- Key Question 3: How good are leadership and management?

Inspectors also provide an overall judgement on the school's current performance and on its prospects for improvement. In these evaluations, inspectors use a four-point scale:

Judgement	What the judgement means
Excellent	Many strengths, including significant examples of sector-leading practice
Good	Many strengths and no important areas requiring significant improvement
Adequate	Strengths outweigh areas for improvement
Unsatisfactory	Important areas for improvement outweigh strengths

The most recent Estyn inspection of Llantarnam School took place in September 2012, the results of which are as follows:

Summary	Judgement
The school's current performance	Unsatisfactory
The school's prospects for improvement	Unsatisfactory
Key Question 1: How good are outcomes?	Unsatisfactory
Key Question 2: How good is provision?	Unsatisfactory
Key Question 3: How good are leadership and management?	Unsatisfactory

The full report is available on the Estyn website:
<http://www.estyn.gov.uk/english/provider/6784050/>

Following this inspection, the school was placed in Special Measures.

Local Authority Assessment

The Local Authority assessment of quality of education at Llantarnam School is undertaken on their behalf by the Education Achievement Service (EAS). The assessment is made by categorising the level of intervention and support required for school improvement against several aspects.

The latest categorisations at the time of going to print are as follows:

Aspect	Category / note
Overall	Critical
Standards	Critical
Safeguarding	Strong
Attendance	Significant
Leadership	Particular
Welsh Government School Banding	Critical
Estyn Inspection Report	Critical
Finance	Forecast of a projected budget surplus for 2013-14 moving into deficit in 2014-15

Key to levels of intervention and support in relation to school performance:

Category	Description
Strong	Routine Support and Monitoring
Minor	Specific Intervention - Minor Issues
Significant	Sustained Intervention - Significant Issues
Particular	Intensive Intervention - Particular Concern
Critical	Critical Intervention - Critical Concern

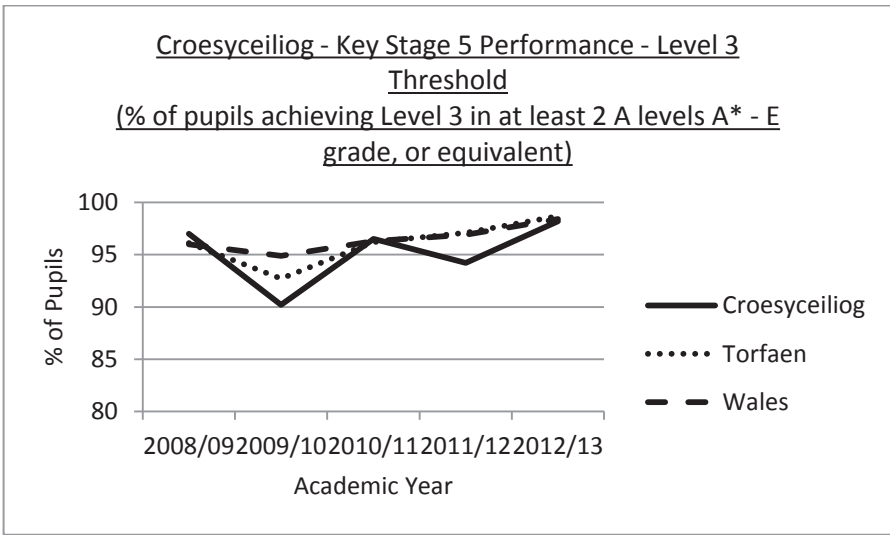
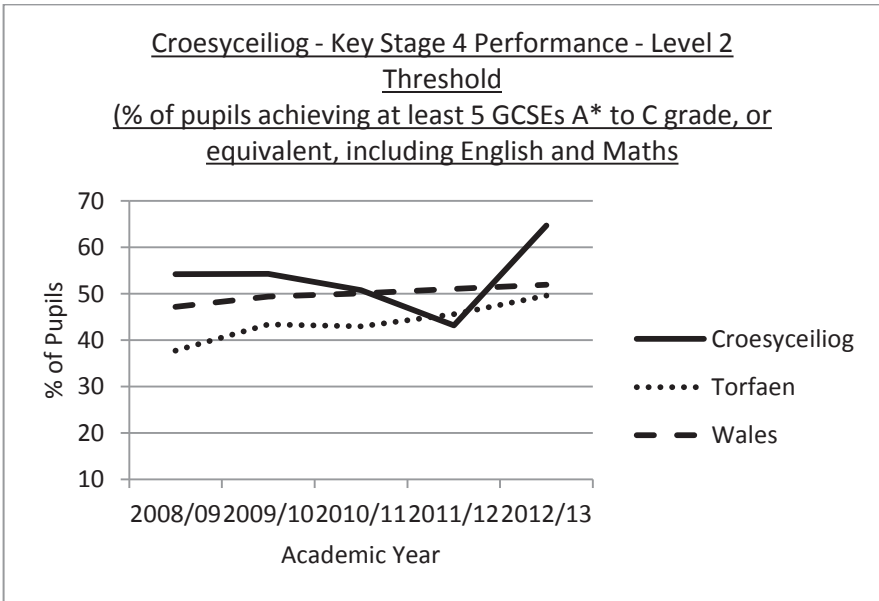
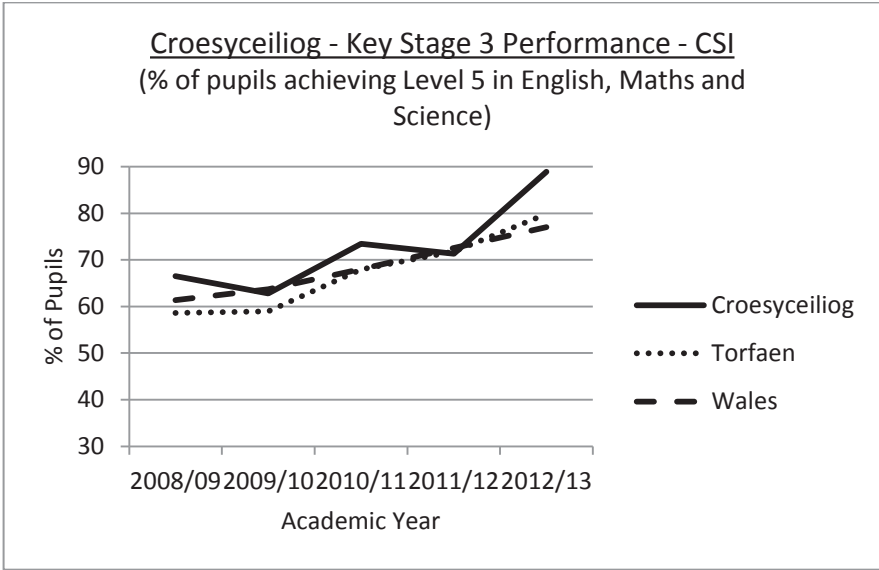
Further information about the Intervention Framework is available on the Torfaen Council's „my say" website:

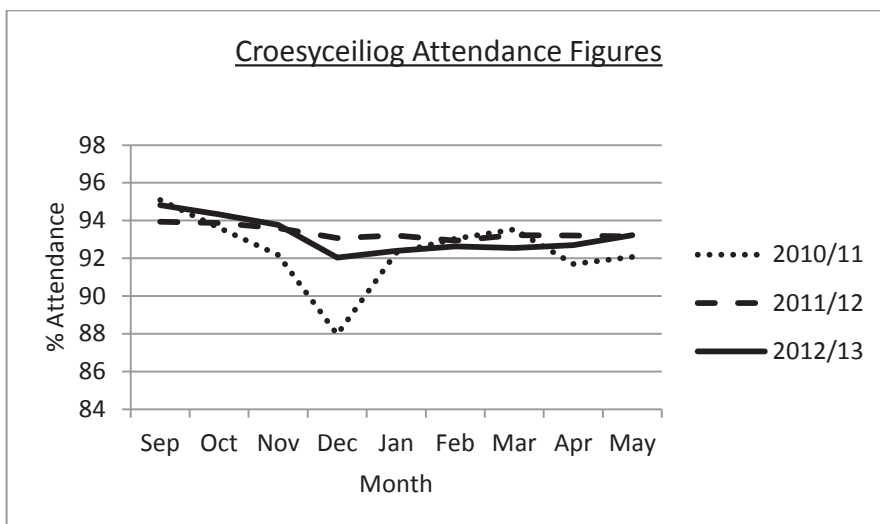
<https://mysay.torfaen.gov.uk/consult.ti/SecSchoolConsult/consultationHome> (English)

<https://mysay.torfaen.gov.uk/consult.ti/SecSchoolConsultCymraeg/consultationHome> (Welsh)

School Performance Report - Croesyceiliog Secondary School

Standards Achieved





Estyn Report

During each inspection, inspectors aim to answer three key questions:

- Key Question 1: How good are the outcomes?
- Key Question 2: How good is provision?
- Key Question 3: How good are leadership and management?

Inspectors also provide an overall judgement on the school's current performance and on its prospects for improvement. In these evaluations, inspectors use a four-point scale:

Judgement	What the judgement means
Excellent	Many strengths, including significant examples of sector-leading practice
Good	Many strengths and no important areas requiring significant improvement
Adequate	Strengths outweigh areas for improvement
Unsatisfactory	Important areas for improvement outweigh strengths

The most recent Estyn inspection of Croesyceiliog School took place in March 2011, the results of which are as follows:

Summary	Judgement
The school's current performance	Adequate
The school's prospects for improvement	Good
Key Question 1: How good are outcomes?	Adequate
Key Question 2: How good is provision?	Good
Key Question 3: How good are leadership and management?	Good

The report is available on the Estyn website:
<http://www.estyn.gov.uk/english/provider/6784051>

Following this inspection, the school was placed under Estyn Monitoring, from which it has been subsequently removed.

Local Authority Assessment

The Local Authority assessment of quality of education at Croesyceiliog School is undertaken on their behalf by the Education Achievement Service (EAS). The assessment is made by categorising the level of intervention and support required for school improvement against several aspects.

The latest categorisations at the time of going to print are as follows:

Aspect	Category / note
Overall	Significant
Standards	Significant
Safeguarding	Strong
Attendance	Significant
Leadership	Significant
Welsh Government School Banding	Minor
Estyn Inspection Report	Significant Issues
Finance	Forecast of a projected budget surplus over the medium term

Key to levels of intervention and support in relation to school performance:

Category	Description
Strong	Routine Support and Monitoring
Minor	Specific Intervention - Minor Issues
Significant	Sustained Intervention - Significant Issues
Particular	Intensive Intervention - Particular Concern
Critical	Critical Intervention - Critical Concern

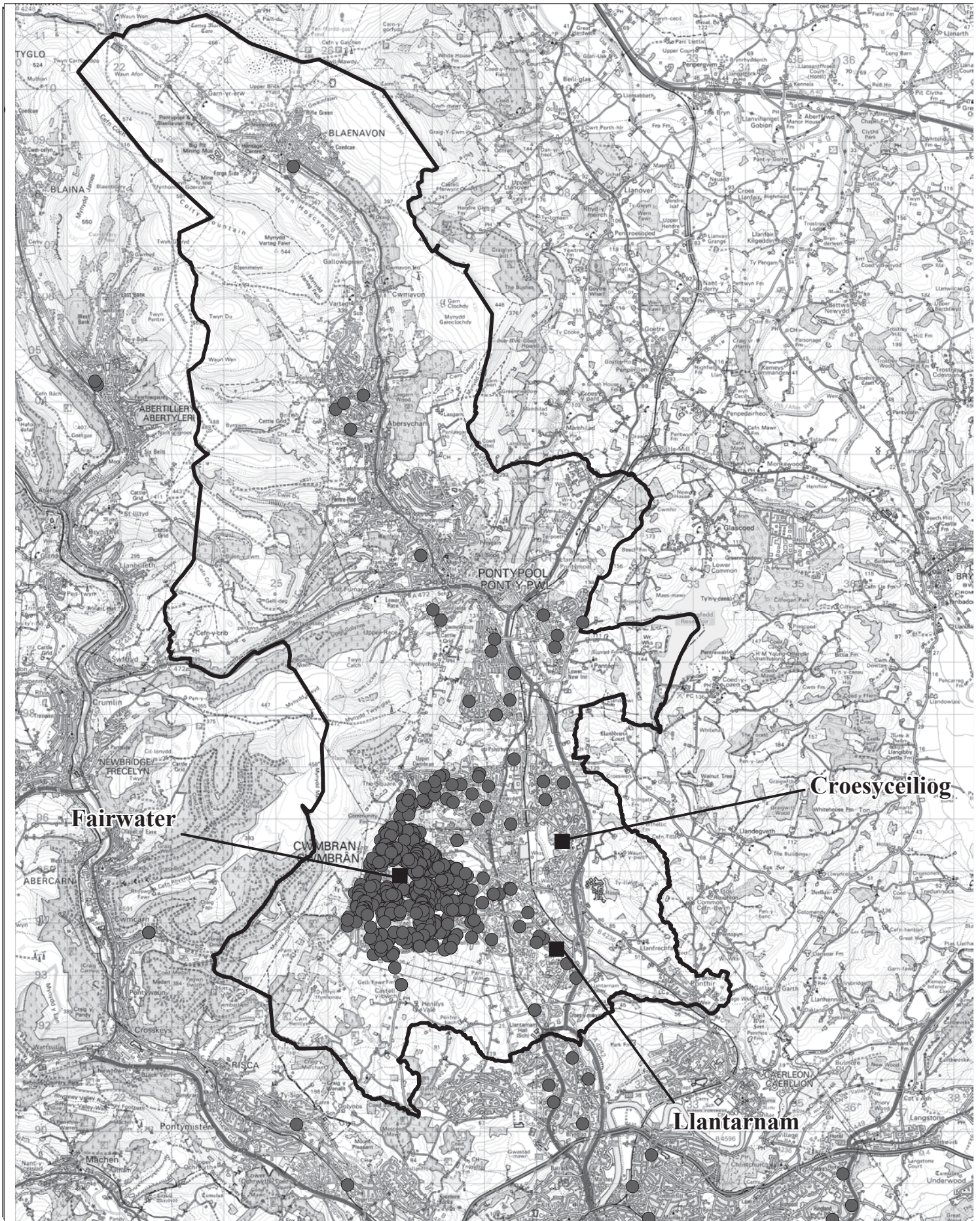
Further information about the Intervention Framework is available on the Torfaen Council's „my say“ website:

<https://mysay.torfaen.gov.uk/consult.ti/SecSchoolConsult/consultationHome> (English)

<https://mysay.torfaen.gov.uk/consult.ti/SecSchoolConsultCymraeg/consultationHome> (Welsh)

Appendix 4 – Maps of Fairwater, Llantarnam & Croesyceiliog Pupils

- Pupils currently attending Fairwater High School
- Pupils currently attending Llantarnam School
- Pupils currently attending Croesyceiliog School
- Pupils currently attending Fairwater High School and Llantarnam School



**TORFAEN
COUNTY
BOROUGH**



**BWRDEISTREF
SIROL
TORFAEN**

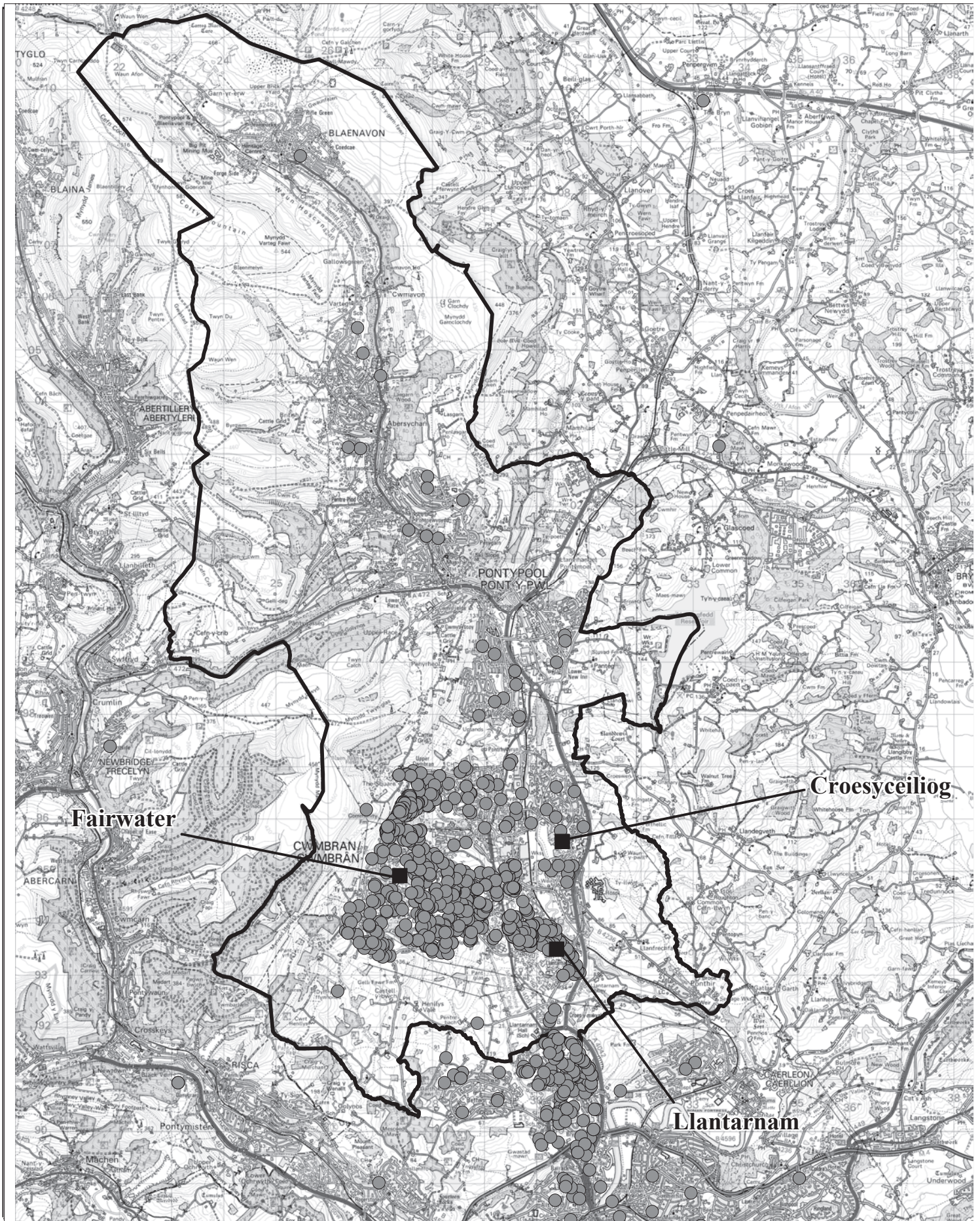
Drawing Title **Pupils currently attending Fairwater High School
Disgyblion sy'n mynychu Ysgol Uwchradd Fairwater ar hyn o bryd**

Drawn	Date	Scale	File Ref	Area:
O.S./DME	24/01/2014	Not to Scale		

Reproduced from Ordnance Survey with permission of the Controller of Her Majesty's Stationary Office (C) Crown copyright. Unauthorised reproduction infringes Crown copyright and may lead to prosecution/civil proceedings. LICENCE No LA 100023426 2013

**Alison Ward CBE
CHIEF EXECUTIVE/PRIF WEITHREDWR**

Atgynhychwyd o Fapiau'r Ordnance Survey gyda chaniatod Rheolwr Llyfrfa Ei Mawrhydi (C) Hawlfraint y Goron. Y mae atgynhyrchu heb awdurdod yn torri Hawlfraint y Goron a gall arwain at erlyniad neu achosion sifil. RHIF Y TRWYDDED LA 100023426 2013



Drawing Title Pupils currently attending Llantarnam School Disgyblion sy'n mynychu Ysgol Llantarnam ar hyn o bryd				
Drawn O.S./DME	Date 24/01/2014	Scale Not to Scale	File Ref	Area:
Reproduced from Ordnance Survey with permission of the Controller of Her Majesty's Stationary Office (C) Crown copyright. Unauthorised reproduction infringes Crown copyright and may lead to prosecution/civil proceedings. LICENCE No LA 100023426 2013				
Atgynhychwyd o Fapiau'r Ordnance Survey gyda chaniatod Rheolwr Llyfrfa Ei Mawrhydi (C) Hawlfraint y Goron. Y mae atgynhyrchu heb awdurdod yn torri Hawlfraint y Goron a gall arwain at erlyniad neu achosion sifil. RHIF Y TRWYDDED LA 100023426 2013				

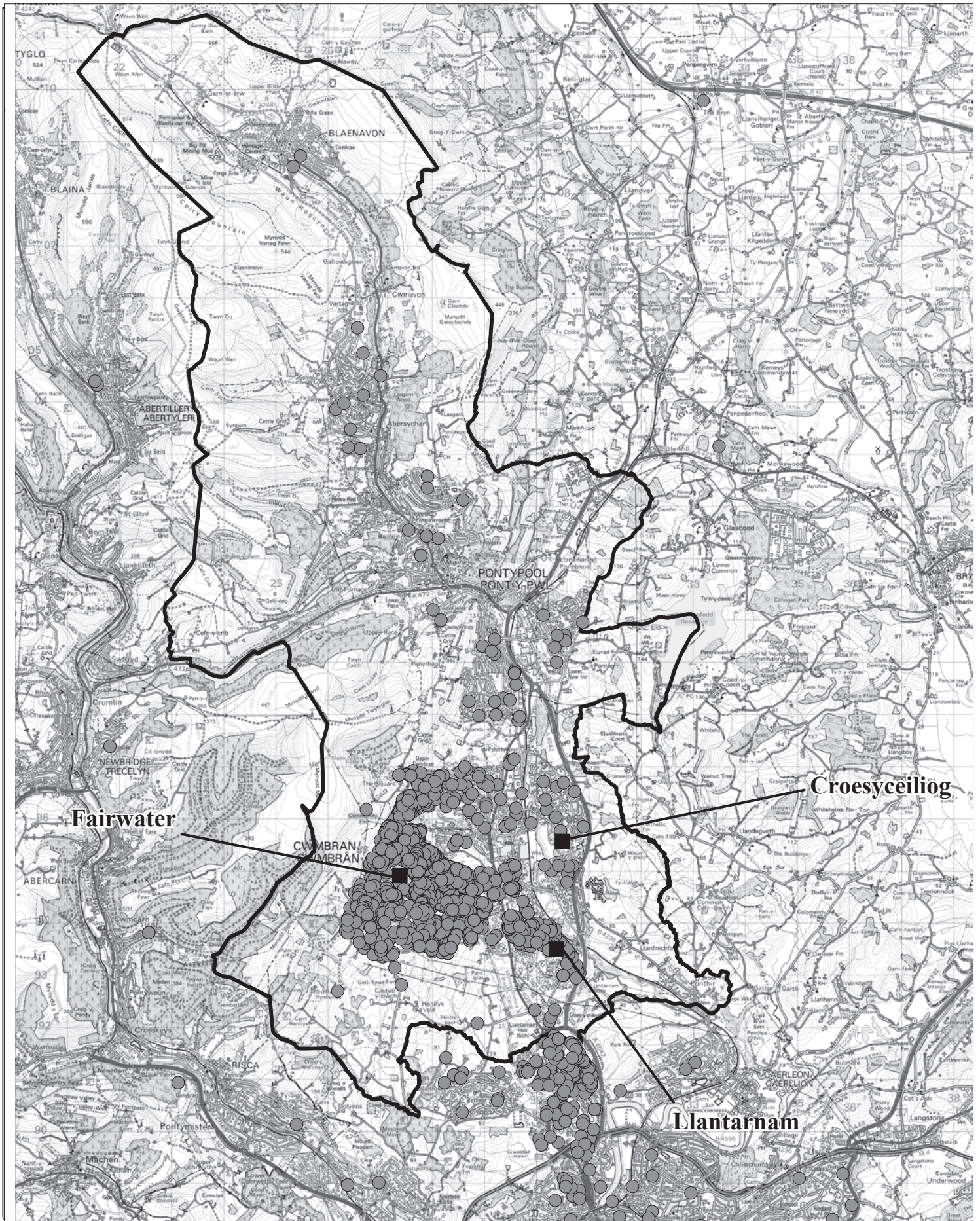


Alison Ward CBE
CHIEF EXECUTIVE/PRIF WEITHREDWR



Drawing Title				
Pupils currently attending Croesyceiliog School Disgyblion sy'n mynychu Ysgol Croesyceiliog ar hyn o bryd				
Drawn	Date	Scale	File Ref	Area:
O.S./DME	24/01/2014	Not to Scale		
<p>Reproduced from Ordnance Survey with permission of the Controller of Her Majesty's Stationary Office (C) Crown copyright. Unauthorised reproduction infringes Crown copyright and may lead to prosecution/civil proceedings. LICENCE No LA 100023426 2013</p> <p>Atgynhychwyd o Fapiau'r Ordnance Survey gyda chaniatod Rheolwr Llyfrfa Ei Mawrhydi (C) Hawlfraint y Goron. Y mae atgynhyrchu heb awdurdod yn torri Hawlfraint y Goron a gall arwain at erlyniad neu achosion sifil. RHIF Y TRWYDDED LA 100023426 2013</p>				

Alison Ward CBE
CHIEF EXECUTIVE/PRIF WEITHREDWR



Pupils currently attending Fairwater High School and Llantarnam School
 Disgyblion sy'n mynychu Ysgol Uwchradd Fairwater ac Ysgol Llantarnam ar hyn o bryd



Drawn	Date	Scale	File Ref	Area:
O.S./DME	24/01/2014	Not to Scale		

Reproduced from Ordnance Survey with permission of the Controller of Her Majesty's Stationary Office (C) Crown copyright. Unauthorised reproduction infringes Crown copyright and may lead to prosecution/civil proceedings. LICENCE No LA 100023426 2013


Alison Ward CBE
CHIEF EXECUTIVE/PRIF WEITHREDWR

Atgynhychwyd o Fapiau'r Ordnance Survey gyda chaniatod Rheolwr Llyfrfa Ei Mawrhydi (C) Hawlfraint y Goron. Y mae atgynhyrchu heb awdurdod yn torri Hawlfraint y Goron a gall arwain at erlyniad neu achosion sifil. RHIF Y TRWYDDED LA 100023426 2013

Appendix 5 – Catchment Area Maps

- Map of Current Catchment Areas
- Map of Proposed Catchment Areas



TORAEŅ COUNTY BOROUGH  BWRDEISTREF SIROL TORAEŅ		Alison Ward CBE CHIEF EXECUTIVE/PRIF WEITHREDWR	
Drawing Title Current Catchment Areas Dalgylchoedd Presennol yr Ysgolion			
Drawn O.S/DME	Date 24/01/2014	Scale Not to Scale	File Ref Area:
Reproduced from Ordnance Survey with permission of the Controller of Her Majesty's Stationary Office (C) Crown copyright. Unauthorised reproduction infringes Crown copyright and may lead to prosecution/civil proceedings. LICENCE No LA 100023426 2013 Aghnyrchwyd o Fapiair Ordnance Survey gyda chaniatod Rheolwr Llyfrfa Eri Mawrhydi (C) Hawlfraint y Goron. Y mae agnyrchu heb awdurdod yn torri Hawlfraint y Goron a gall arwain at erlymied neu achosion siŵl. RHIF Y TRWYDDED LA 100023426 2013			



Drawing Title Proposed Catchment Areas Dalgylchoedd Arfaethedig			
Drawn O.S/DME	Date 24/01/2014	Scale Not to Scale	File Ref Area:
Reproduced from Ordnance Survey with permission of the Controller of Her Majesty's Stationary Office (C) Crown copyright. Unauthorised reproduction infringes Crown copyright and may lead to prosecution/civil proceedings. LICENCE No LA 100023426 2013			
Aghnyrchwyd o Fapiau'r Ordnance Survey gyda chaniatod Rheolwr Llyfrfa Eri Mawrhydi (C) Hawlfraint y Goron. Y mae agnyrchu heb awdurdod yn torri Hawlfraint y Goron a gall arwain at erlymied neu achosion siŵl. RHIF Y TRYDYDDED LA 100023426 2013			

TORAEEN
COUNTY
BOROUGH



BWRDEISTREF
SIROL
TORAEEN

Alison Ward CBE
CHIEF EXECUTIVE/PRIF WEITHREDWR

Appendix 6 – Proposed Catchment Area Adjustment

Proposed Catchment Area for Croesyceiliog School

According to the Council Tax register there are currently 8,655 properties in the existing Croesyceiliog School catchment area. If the catchment was extended to include Southville and the current catchment area of Llantarnam Community Primary School (i.e. additional areas to the right of Cwmbran Drive) there would be an extra 2,364 properties, giving a total of 11,019.

There are currently 1,257 primary aged children living in the proposed catchment area and attending primary schools as follows:

Pontnewydd	307
Maendy	142
Llantarnam	139
Croesyceiliog	332
Llanyrafon	259
Coed Eva	24
Blenheim Road	3
Woodlands	22
Nant Celyn	24
Greenmeadow	5

Total: 1257

Divided by the 7 primary age groups this equates to 180 pupils (6 form entry) and if multiplied by 5 (for Y7 – Y11) gives a possible total of 900 11 -16 pupils. The assumption does not take into account parental preference and that pupils would attend their catchment school.

Until such time that post 16 provision is determined, a 6th form of 250 pupils is assumed giving a potential total of 1150 pupils for an 11 – 18 school.

In addition the following large housing developments (known and potential) that lie in the proposed catchment area would need to be factored in:

South Sebastopol

County Hall

Llanfrecfa Grange

Malthouse

Llantarnam School

Proposed Catchment Area for “New” School located at Fairwater High School site

According to the Council Tax register there are currently 10,361 properties in the proposed catchment area for the “new” school. This is the area to the left of Cwmbran Drive and excludes the existing Croesyceiliog School catchment area (which includes Maendy, Pontnewydd and part of Upper Cwmbran).

There are currently 1,516 primary aged children living in the proposed catchment area and attending primary schools as follows:

Coed Eva	390
Nant Celyn	308
Woodlands	248
Greenmeadow	165
Blenheim Road	158
Llanyravon	87
Croesyceiliog	55
Pontnewydd	53
Maendy	33
Llantarnam	19
Total:	1,516

Divided by the 7 primary age groups this equates to 217 pupils (7/8 form entry) and if multiplied by 5 (for Y7 – Y11) gives a possible total of 1085 11 -16 pupils. The assumption does not take into account parental preference and that pupils would attend their catchment school.

Until such time that post 16 provision is determined, a 6th form of 250 pupils is assumed giving a potential total of 1335 pupils for an 11 – 18 school.

Although there are not as many significant housing developments in this proposed catchment area, the following would need to be factored in at some time in the future:

Former Police College site.

Conclusion

Based on the above assessment, there are sufficient places to accommodate all the current Primary School aged pupils with a balanced split between the 2 schools based on the proposed catchment areas.

There is also some headroom in Croesyceiliog School to cater for future housing developments predicted in that catchment.

Appendix 7 – Revenue Savings Assumptions

Figures are based on the potential savings that would materialise through the Funding Formula and cover the areas of building maintenance, caretakers, cleaners, grounds maintenance, energy, clerk to governors, National Non-Domestic Rates (NNDR), workforce remodelling (fixed element only), school councils, water (standing charge), schools special/energy (fixed element only), absence cover (fixed element only), School Meals Service (Premises element only for Secondary schools), Administrative Staff, Foreign Language Assistants (Secondary schools only) and leadership funding.

In the year of closure the savings materialised through the Funding Formula will be required to fund the cost of change management as a result of the closure. The potential savings identified in this exercise are for the first full year after the year of closure.

For this exercise the closure of any school has been assumed will take place at 31st August in all cases.

When calculating options concerning the closure of Llantarnam or Fairwater schools, it has been assumed that the school which remains open will accommodate all pupils including Post 16. The grant funding for Post 16 will move with the pupils, as the grant is based on activity and pupil numbers.

The additional funding required for leadership in those schools where the pupils will be transferring on closure, has been calculated on the assumption that all pupils transfer to the receiving school.

There have been assumptions made on the potential revenue cost due to changes in the condition of the buildings. It has been assumed that this would effect the funding of energy only.

There have been assumptions made on the type of investment in the schools which will affect the rates bill. Therefore, estimated costs of NNDR have been assumed, although these costs are unknown until the building has been evaluated and the costs can be significant.

Assumes immediate transfer to Asset Management of asset upon closure.

Appendix 8 - Distribution List for the Consultation Document

- The Governing body of each school maintained by Torfaen LA;
- The Headteacher of each school maintained by Torfaen LA;
- The Diocesan Director of Education of the Roman Catholic Church;
- The Diocesan Director of Education of the Church in Wales;
- The Board of Mission of the Church in Wales;
- Awdurdod Cynwysterau, Cwricwlwm ac Asesu Cymru (the Qualifications, Curriculum and Assessment Authority for Wales);
- The Welsh Joint Education Committee;
- Welsh Language Commissioner;
- The Higher Education Funding Council for Wales;
- Welsh Government (Welsh Ministers);
- ESTYN;
- Pan - Gwent Chief Education Officers (Caerphilly, Newport, Monmouthshire, Blaenau Gwent, to distribute to schools in their areas as appropriate);
- The Early Years Development and Childcare Partnership;
- Children & Young People's Partnership
- Coleg Gwent;
- The Careers Service;
- Torfaen Association of school Governors;
- The Parent Teacher Association of Wales;
- The Welsh Primary Schools Association;
- The Welsh Secondary Schools Association;
- Libraries; (Blaenavon, Cwmbran and Pontypool);
- Other Directorates of Torfaen County Borough Council;
- Schools Library Service;
- Blaenavon Community Council;
- Cwmbran Community Council;
- Pontypool Community Council;
- Ponthir Community Council;
- Henllys Community Council;
- Croesyceiliog and Llanyrafon Community Council;
- DCELLS (Welsh Government)
- National Council for Education and Training in Wales;
- All relevant Professional Associations (NUT; NASUWT; ATL; UCAC; UNISON; GMB);
- Local AM – Lynne Neagle;
- Local MP - Paul Murphy;
- AMs and MPs for other authorities in Pan-Gwent area.
- All Elected Members of Torfaen County Borough Council;
- Parents/Carers of all pupils affected by proposals
- RhAG (Parents for Welsh Medium Education);
- Registered Private/Voluntary Early Years Settings/Providers in Torfaen;
- Torfaen Voluntary Alliance;
- Communities First Partnership Board.
- CYDAG (Cwmdeithas Ysgolion Dros Addysg Gymraeg)
- Mudiad Ysgolion Meithrin
- Education Achievement Service (EAS)
- The relevant Regional Transport Consortium
- The Police and Crime Commissioner for the area

Appendix 9 – Response Proforma

Proposal: Consultation on the removal of surplus secondary school places in the south of Torfaen.

Consultation Period: 17th February 2014 to 31st March 2014.

Your Views: We would like your views on the above proposal. This is also your opportunity to suggest alternatives to this proposal. Please either complete this form and return to the Interim Head of Education Services (FAO Mark Horton) c/o Torfaen County Borough Council, Civic Centre, Pontypool, Torfaen NP4 6YB, or email: secondaryreview@torfaen.gov.uk, or give us your views online at:

<https://mysay.torfaen.gov.uk/consult.ti/SecSchoolConsult/consultationHome> (English)
<https://mysay.torfaen.gov.uk/consult.ti/SecSchoolConsultCymraeg/consultationHome>
(Welsh)

Responses must be received by 5pm on 31st March 2014.

Please note that any unfavourable comments made during the consultation period will not be treated as objections and that if you wish to object, you should do so in writing during the statutory objection period, should the proposals progress to that stage. However, if consultees submit a request during the objection period that a response submitted at the consultation stage should be treated as an objection, this will be accepted.



Should you require a copy of the consultation report please provide your contact details below:

Email:

Name/Address:

